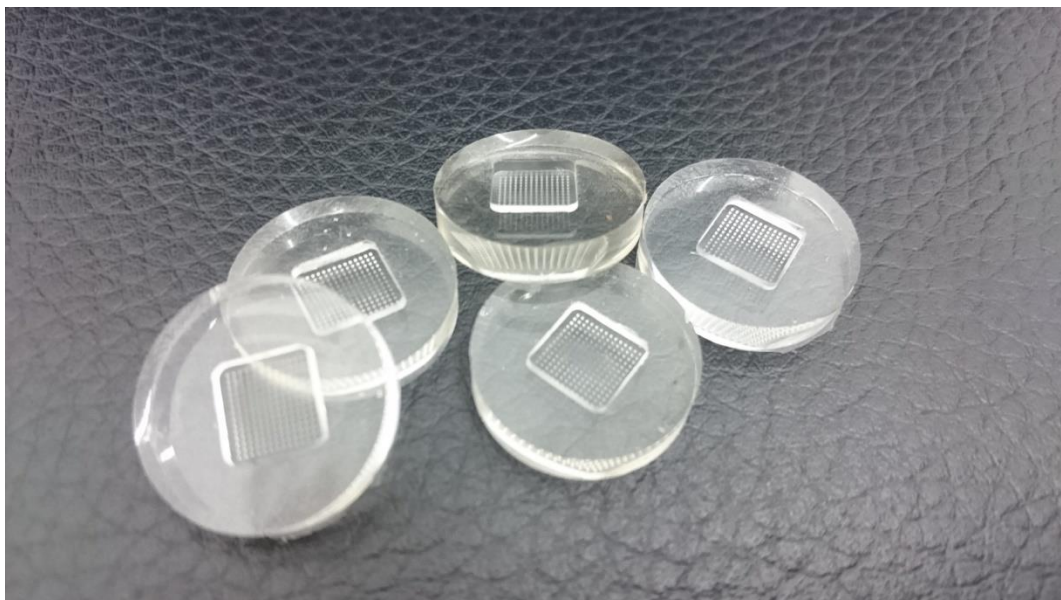




MPatch Microneedle Template



Our disruptive technology **MPatch™** Microneedle Templates incorporates cutting-edge microneedle technology for moulding top-quality dissolvable microneedles. Based on our proprietary fabrication technology, a stainless steel master mould is machined from which silicone templates are moulded for making dissolvable microneedle patches. These silicone templates do not degrade after repeated use. The dissolvable microneedles made from these templates have sharp tips and well-defined edges.

MPatch™ Microneedle Templates are exclusively made for producing dissolvable microneedle patches with excellent quality and repeatability. These templates are made of silicone which is heat and chemical resistant, and extremely durable.

Instructions for Use Ensure that the MPatch™ Microneedle Templates are clean by washing with mild soap and letting them air dry completely. Next, pipette a small quantity (50ul – 100ul) of the drug mixture onto the microneedle catchment. Subject the templates to centrifugal force for >60 seconds to ensure that all microneedle cavities are completely filled-up. Then, dry the patches (30% - 45% RH) for 4 – 48 hours depending on the material used. Lastly, use an adhesive tape to vertically de-

mould the formed microneedle patch from the templates.

Product Specifications

Characteristic	Specification
Dimensions	19mm (Dia) x 4mm (H)
Material	RTV Silicone (PDMS)
Array	10x10
Sterilization	Autoclave (Optional)
Microneedle Dimensions	200 – 1,000um Height; 200umx200um (Base); 500um Pitch
No. of Use	Repeated Use
Operating Temp.	-25 – 200 °C